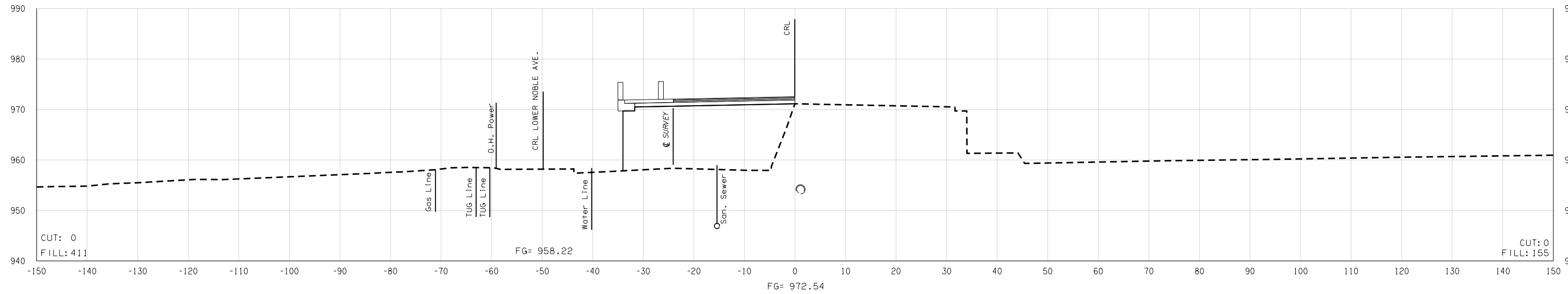
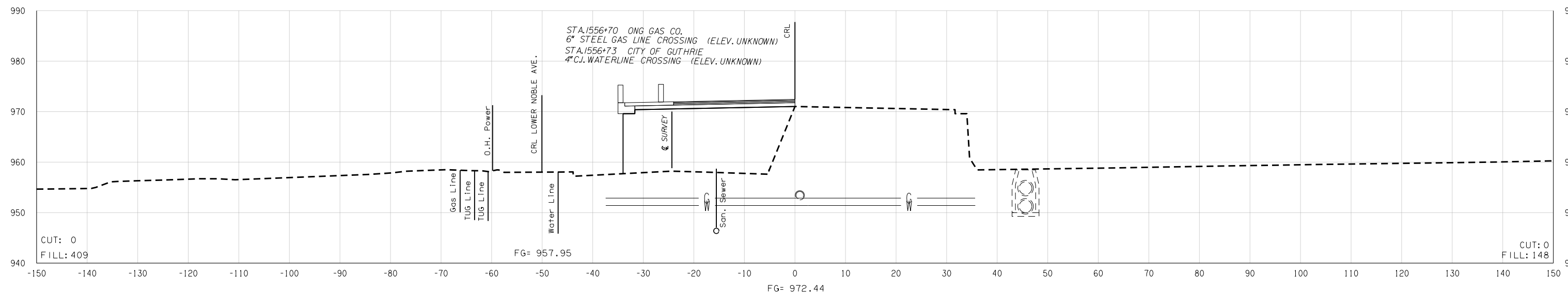


FED. ROAD DIST. NO.	STATE	JOB PIECE NO.	FISCAL YEAR	SHEET NO.	TOTAL SHEETS
6	OKLA.				

DESCRIPTION	REVISIONS	DATE



1556 + 80.00



STA. 1556+70 ONG GAS CO.
6" STEEL GAS LINE CROSSING (ELEV. UNKNOWN)
STA. 1556+73 CITY OF GUTHRIE
4" C.I. WATERLINE CROSSING (ELEV. UNKNOWN)

1556 + 69.78

Y:\Division 4\21860 (04) \Design\21860_XSECO1.dgn

08-19-16